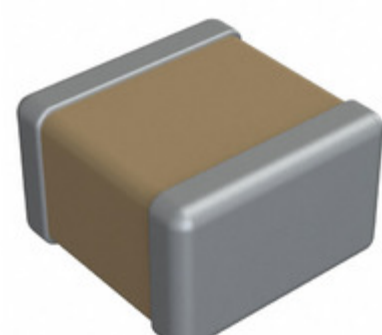


C17AH221J-6UN-X1T



Images are for reference only.
See Product Specifications for product details.
Buy C17AH221J-6UN-X1T with confidence from
Component-World.HK, 1 Year Warranty



Part Number: C17AH221J-6UN-X1T
Manufacturer: Dielectric Laboratories
Description: CAP CER 1111
Data sheet: [MLC, SLC Capacitor Catalog](#)

RoHS Status: Lead free / RoHS Compliant
Ship From: Hong Kong
Shipment Way: DHL/Fedex/TNT/UPS/EMS

[Request For Quotation](#)

PRODUCT PARAMETER

Part Number	C17AH221J-6UN-X1T	Manufacturer	Dielectric Laboratories
Description	CAP CER 1111	Lead Free Status / RoHS Status	Lead free / RoHS Compliant
Quantity Available	56969 pcs	Data sheet	MLC, SLC Capacitor Catalog
Category	Capacitors	Voltage - Rated	200V
Tolerance	±5%	Thickness (Max)	-
Temperature Coefficient	P90	Size / Dimension	0.110" L x 0.110" W (2.79mm x 2.79mm)
Series	AH	Ratings	-
Packaging	Tape & Reel (TR)	Package / Case	1111 (2828 Metric)
Other Names	C17AH221J-6UN-X1T-2K	Operating Temperature	-55°C ~ 125°C
Mounting Type	Surface Mount, MLCC	Moisture Sensitivity Level (MSL)	1 (Unlimited)
Manufacturer Standard Lead Time	26 Weeks	Lead Style	-
Lead Spacing	-	Lead Free Status / RoHS Status	Lead free / RoHS Compliant
Height - Seated (Max)	-	Features	-
Failure Rate	-	Detailed Description	220pF ±5% 200V Ceramic Capacitor P90 1111 (2828 Metric)
Capacitance	220pF	Applications	RF, Microwave, High Frequency

Component-World.com is a Reliable Stocking Distributor of Electronic Components. We specialize in all Dielectric Laboratories series electronic components. We have 56969 pieces of Dielectric Laboratories C17AH221J-6UN-X1T in stock available now. Request a quote from electronics components distributor at Component-World.com, our sales team will contact you within 24 hours.
RFQ Email: info@Components-World.com

RELATED PRODUCTS

	Part#: C17AH1R9B-7UN-X1T Description: CAP CER 1111	Manufacturers: Dielectric Laboratories	RFQ
	Part#: C17AH1R8B-7UN-X1T Description: CAP CER 1111	Manufacturers: Dielectric Laboratories	RFQ
	Part#: C17AH221K-6ZN-X1T Description: CAP CER 1111	Manufacturers: Dielectric Laboratories	RFQ
	Part#: C17AH1R9C-7ZN-X1T Description: CAP CER 1111	Manufacturers: Dielectric Laboratories	RFQ
	Part#: C17AH270J-7UN-X1T Description: CAP CER 1111	Manufacturers: Dielectric Laboratories	RFQ
	Part#: C17AH200J-7UN-X1T Description: CAP CER 1111	Manufacturers: Dielectric Laboratories	RFQ
	Part#: C17AH220K-7ZN-X1T Description: CAP CER 1111	Manufacturers: Dielectric Laboratories	RFQ
	Part#: C17AH2R0B-7UN-X1T Description: CAP CER 1111	Manufacturers: Dielectric Laboratories	RFQ
	Part#: C17AH1R8C-7ZN-X1T Description: CAP CER 1111	Manufacturers: Dielectric Laboratories	RFQ
	Part#: C17AH2R0C-7ZN-X1T Description: CAP CER 1111	Manufacturers: Dielectric Laboratories	RFQ
	Part#: C17AH2R1B-7UN-X1T Description: CAP CER 1111	Manufacturers: Dielectric Laboratories	RFQ
	Part#: C17AH1R7C-7ZN-X1T Description: CAP CER 1111	Manufacturers: Dielectric Laboratories	RFQ
	Part#: C17AH200K-7ZN-X1T Description: CAP CER 1111	Manufacturers: Dielectric Laboratories	RFQ
	Part#: C17AH1R7B-7UN-X1T Description: CAP CER 1111	Manufacturers: Dielectric Laboratories	RFQ
	Part#: C17AH271K-6ZN-X1T Description: CAP CER 1111	Manufacturers: Dielectric Laboratories	RFQ
	Part#: C17AH271J-6UN-X1T Description: CAP CER 1111	Manufacturers: Dielectric Laboratories	RFQ
	Part#: C17AH240K-7ZN-X1T Description: CAP CER 1111	Manufacturers: Dielectric Laboratories	RFQ
	Part#: C17AH240J-7UN-X1T Description: CAP CER 1111	Manufacturers: Dielectric Laboratories	RFQ
	Part#: C17AH270K-7ZN-X1T Description: CAP CER 1111	Manufacturers: Dielectric Laboratories	RFQ
	Part#: C17AH220J-7UN-X1T Description: CAP CER 1111	Manufacturers: Dielectric Laboratories	RFQ

Related keywords for C17AH221J-6UN-X1T

Dielectric Laboratories C17AH221J-6UN-X1T	C17AH221J-6UN-X1T distributor	C17AH221J-6UN-X1T supplier	C17AH221J-6UN-X1T price
C17AH221J-6UN-X1T download datasheet	C17AH221J-6UN-X1T datasheet	C17AH221J-6UN-X1T stock	buy C17AH221J-6UN-X1T
Dielectric Laboratories C17AH221J-6UN-X1T	DLI C17AH221J-6UN-X1T	Knowles DLI C17AH221J-6UN-X1T	